



Introduction to the 2025 Main Residency Match

National Resident Matching Program
Jeanette L. Calli, MS, Chief of Match Operations
November 14, 2024

THE MATCH[®]
NATIONAL RESIDENT MATCHING PROGRAM[®]

2025 Main Residency Match Calendar

Monday, September 16
12:00 P.M. ET

NRMP Match Registration Opens – Program users register, check quota, and set their Supplemental Offer and Acceptance Program® (SOAP®) status

Wednesday, September 25

Applications available to programs using ERAS®

Friday, January 31
11:59 P.M. ET

Quota Change, Withdrawal, & SOAP Participation Status Deadline
Standard Registration Deadline for Applicants

Monday, February 3
12:00 P.M. ET

Ranking Opens for applicants and programs

Wednesday, March 5
9:00 P.M. ET

Rank Order List (ROL) Certification Deadline for applicants and programs

Match Week & SOAP

Monday, March 17
10:00 A.M. ET

SOAP Begins
Program and Applicant Match Status Released

Tuesday, March 18

Programs can review SOAP applications in their preferred application service, interview, and begin creating Preference Lists in NRMP

Thursday, March 20
9:00 A.M. – 9:00 P.M. ET

Four SOAP Offer Rounds

Friday, March 21
12:00 P.M. ET

Match Day!

≈ July 1

Training Begins



Match Participation Agreement

- Provides the rules governing the matching process
- Different versions for different users
- Important Notices provide highlights of the Match Participation Agreement (MPA)
- All Match participants must electronically sign the MPA as part of the registration process

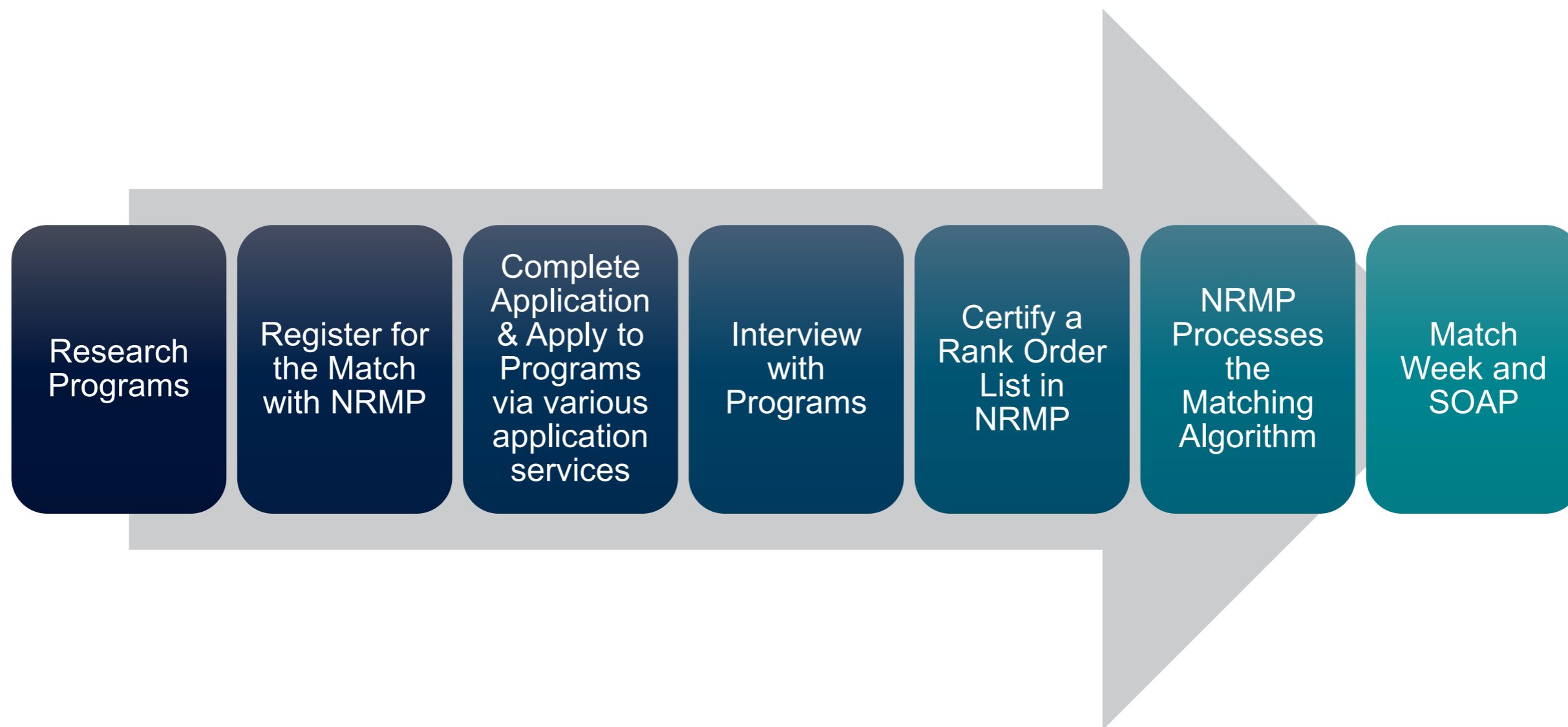


NRMP Policy

- Outline participants' unique roles and responsibilities
- Establish a binding commitment to enter training
- Prohibit coercive questioning and pressure about ranking
- Protect the confidentiality of rank order lists
- Incorporate policies and procedures for terminating a binding commitment or investigating and alleged breach of policy

Match policies are central to processing a Match

The Application and Matching Process



Types of Programs in the Match

Categorical	C	Training that is 3-7 years in length, begins in the PGY-1 year, and leads to specialty board certification.
Primary Care Categorical	M	Categorical programs in primary care offered by some <u>Internal Medicine</u> and <u>Pediatrics</u> programs.
Preliminary	P	Training that is one year in length in transitional, medicine, surgery, or other specialty programs and provides the prerequisite training for advanced programs.
Advanced	A	Training that is 3-4 years in length in specialty programs that begin after one or more years of preliminary training. Advanced positions in the 2025 Match are PGY-2 positions that begin in 2026.
Reserved-Physician	R	Training in specialty programs reserved for physicians with prior graduate medical education and who can enter advanced training in the year of the Match. Reserved-Physician positions in the 2025 Match are PGY-2 positions that begin in 2025.

Primary vs. Supplemental ROL

What is a Primary ROL?

- List for categorical, advanced, physician-reserved programs, and sometimes preliminary programs
- Can be a mix of geographic location and specialties

What is a Supplemental ROL?

- List for preliminary programs that are attached to any advanced programs on the primary ROL
- Intended to provide full course of training
- Can be a mix of geographic location and specialties
- Can have up to 16 unique supplemental lists

Ranking Wisdom

Request NRMP Program Code(s) from the programs with which you interviewed.

Your rank order list can contain a mix of program types and specialties.

Rank programs in the order of your true preference.

Rank only programs where you meet the institution and program appointment requirements.

Placing a program on your ROL creates a **binding commitment** if a match occurs.

NRMP will not enter or modify rank order lists.

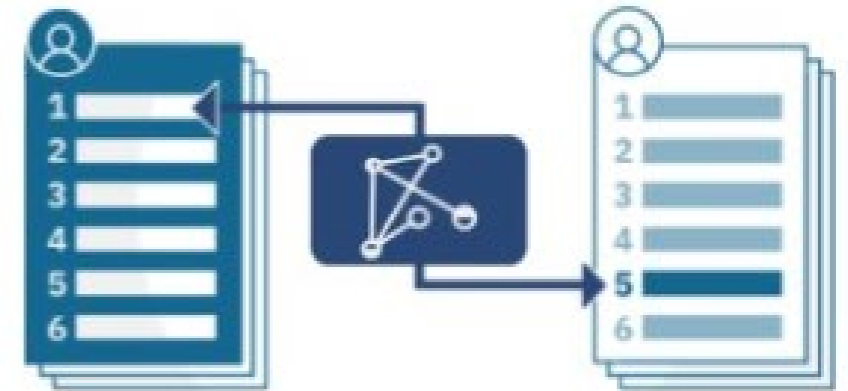


The Matching Algorithm

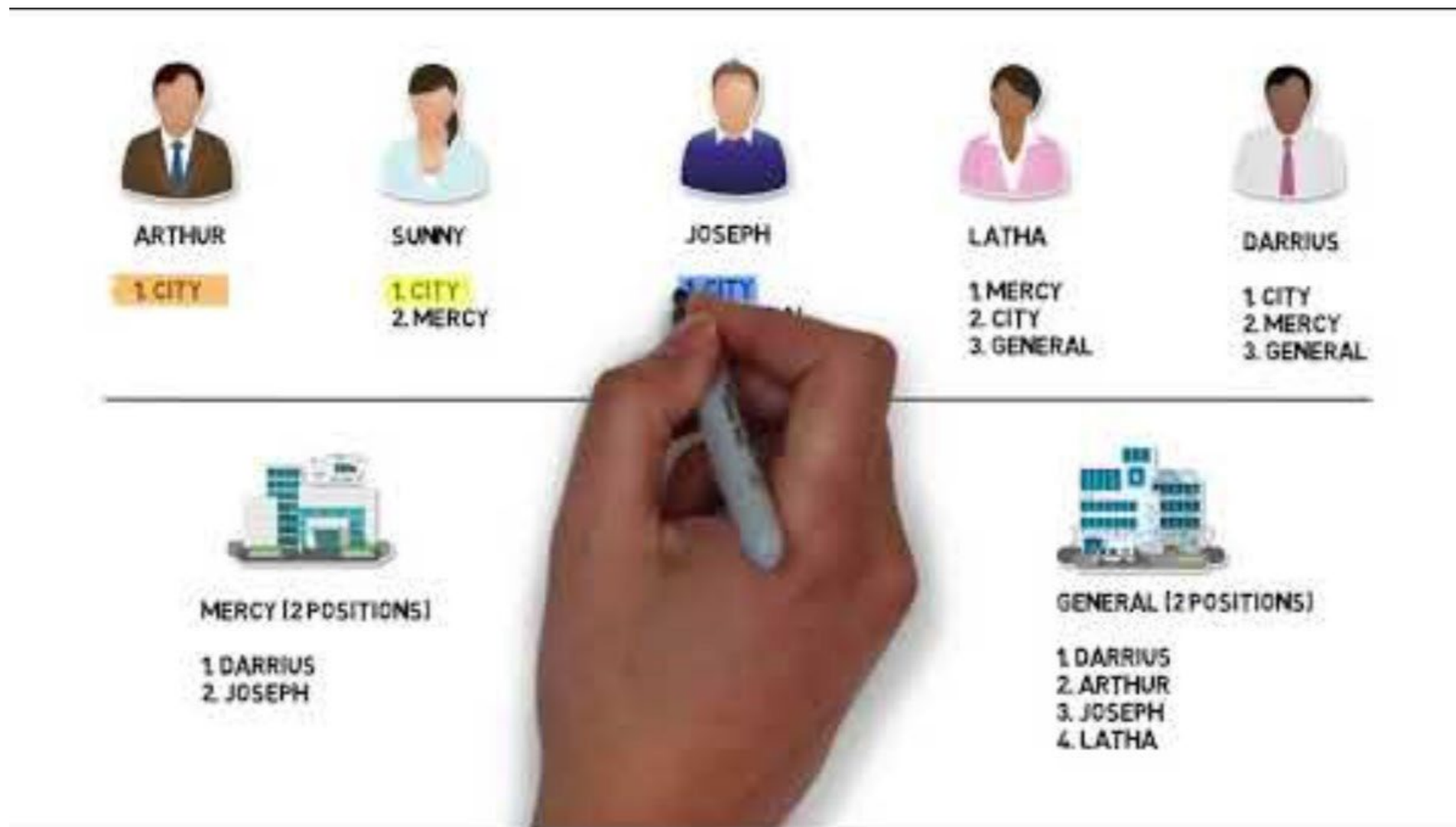
The algorithm is applicant proposing - the process begins with an attempt to match an applicant to the program ranked #1 by that applicant

A tentative Match occurs if the program also ranked the applicant and:

- the program has unfilled positions **or**
- the program is filled **but** the applicant is ranked higher than another applicant already matched tentatively to the program



How the Matching Algorithm Works



Match Week and SOAP


- Match Week is the third week of March
- Begins at 10:00 a.m. ET on Monday and ends at 12:00 p.m. ET on Friday when applicants and programs learn the results of the Match
- Positions left unfilled after the matching algorithm has been processed are offered to eligible applicants through the Supplemental Offer and Acceptance Program[®] (SOAP[®])




What is SOAP?

SOAP is not another Match


Applicants apply to programs using ERAS or the application designated by the program



Programs review applications, contact applicants of interest, and express preferences with lists of applicants created in the R3 system



Unfilled positions are offered to eligible applicants on the program's preference list in a series of four rounds



Positions offered and accepted constitute a binding commitment under the Match Participation Agreement

2025 Match Week & SOAP Schedule

Monday, March 17

- 9:30 a.m. Medical school *Unmatched Applicants* report available (embargoed until 10:00 am ET)
- 10:00 a.m. Programs learn if they filled
Applicants learn if they matched
- 11:00 a.m. SOAP applicants can start preparing and sending applications via the application designated by the program

Tuesday, March 18

- 8:00 a.m. Programs can begin viewing SOAP applications and can contact/interview applicants upon receipt of an application
- 11:30 a.m. Programs can begin creating preference lists in the NRMP's R3 system

Wednesday, March 19

Programs continue reviewing SOAP applications and interviewing

2025 Match Week & SOAP Schedule

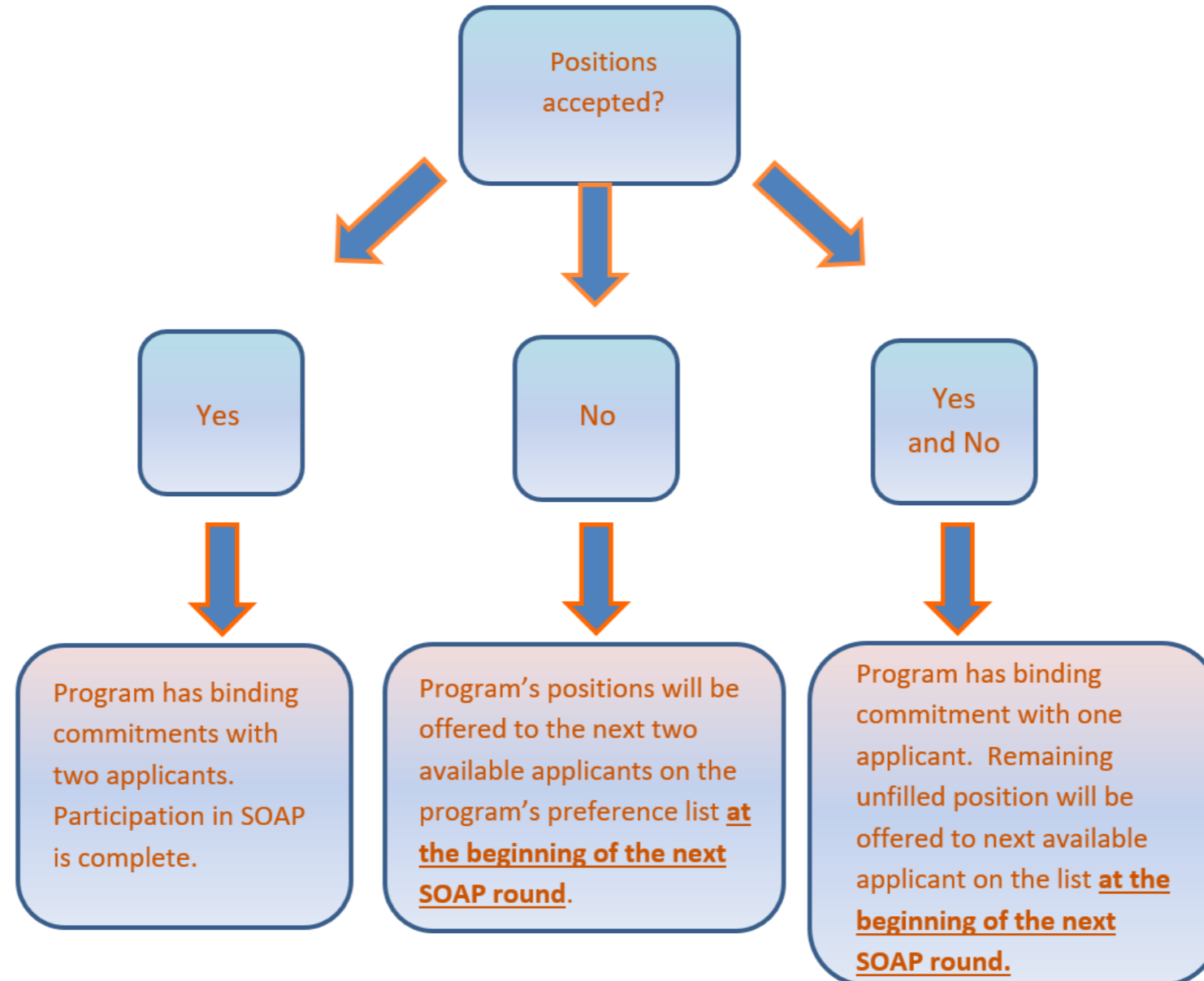
Thursday, March 20

- 8:00 a.m. Confidential *Advance Data Tables* available
Medical school confidential Match results and Match notification letters available
- 9:00 a.m. **SOAP Offer Rounds Begin**
Medical schools can view the *SOAP Schools Report*
SOAP-ineligible applicants may begin accepting offers from non-SOAP-/non-Match-participating programs
- 2:00 p.m. Program *Confidential Roster of Matched Applicants* released
- 8:00 p.m. **SOAP Offer Rounds End**
- 8:30 p.m. Programs can update the number of unfilled positions
- 9:00 p.m. **SOAP ends**
Updated *List of Unfilled Programs* available to applicants

How SOAP Rounds Work



How SOAP Rounds Work

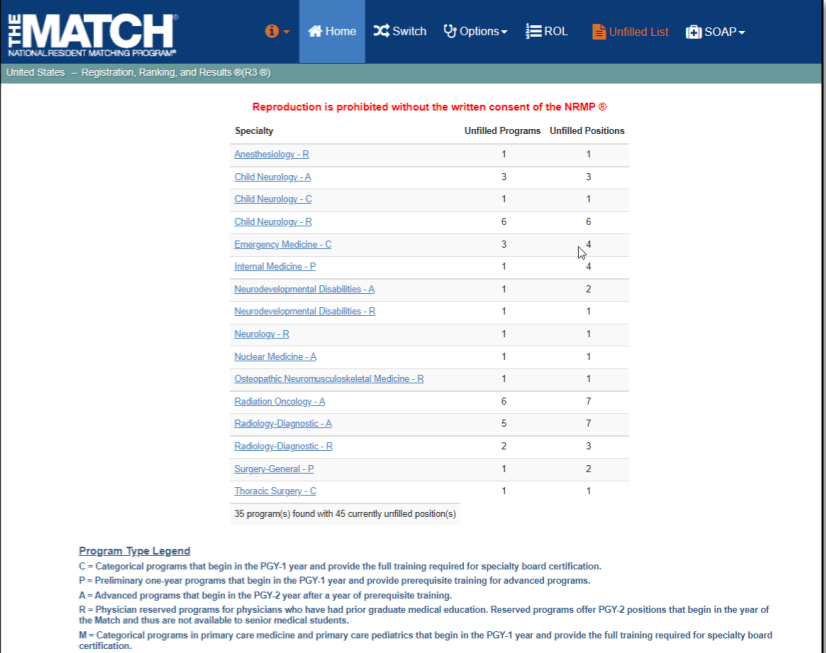


Post-SOAP

All applicants who are unmatched or partially matched will have access to the *List of Unfilled Programs*

Applicants apply to remaining unfilled programs

Programs can create positions **ONLY** for partially-matched applicants beginning at 9:00 p.m. ET on Thursday



Reproduction is prohibited without the written consent of the NRMP ®

Specialty	Unfilled Programs	Unfilled Positions
Anesthesiology - R	1	1
Child Neurology - A	3	3
Child Neurology - C	1	1
Child Neurology - R	6	6
Emergency Medicine - C	3	4
Internal Medicine - P	1	4
Neurodevelopmental Disabilities - A	1	2
Neurodevelopmental Disabilities - R	1	1
Neurology - R	1	1
Nuclear Medicine - A	1	1
Orthopaedic Neuromusculoskeletal Medicine - R	1	1
Radiation Oncology - A	6	7
Radiology-Diagnostic - A	5	7
Radiology-Diagnostic - R	2	3
Surgery-General - P	1	2
Thoracic Surgery - C	1	1

35 program(s) found with 45 currently unfilled position(s)

Program Type Legend
 C = Categorical programs that begin in the PGY-1 year and provide the full training required for specialty board certification.
 P = Preliminary one-year programs that begin in the PGY-1 year and provide prerequisite training for advanced programs.
 A = Advanced programs that begin in the PGY-2 year after a year of prerequisite training.
 R = Physician reserved programs for physicians who have had prior graduate medical education. Reserved programs offer PGY-2 positions that begin in the year of the Match and thus are not available to senior medical students.
 M = Categorical programs in primary care medicine and primary care pediatrics that begin in the PGY-1 year and provide the full training required for specialty board certification.

Match Day!

Friday, March 21

12:00 p.m. Medical school Match Day ceremonies.
Applicant Match results available
Advance Data Tables available



Support Guides & Video Resources



Entering and Certifying a Rank Order List

Main Residency Match

Users: Main Residency Match Applicants

Rank & Order	Program Rank	Institution & Program Description	Search Rank	Status	NRMP Program Code	ACGME Program Code	Remove
1	1	Georgetown University Hospital, DC - Internal Medicine		ACTIVE	1882140C3	140191111	X
2	2	National Medical Center/Georgetown, DC - Internal Medicine		ACTIVE	1880140C3	140191112	X
3	3	Georgetown, West Institution, DC - Internal Medicine		ACTIVE	1884140C3	140191113	X
4	4	Charlottesville University, VA - Internal Medicine		ACTIVE	173140C3	140222222	X
5	5	Stanford Univ, Palo Alto, CA - Internal Medicine		ACTIVE	1743140C3	140555555	X
6	6	Stanford Univ, Palo Alto, CA - Internal Medicine		ACTIVE	1742140C3	140222223	X
7	7	Stanford Univ, Palo Alto, CA - Internal Medicine		ACTIVE	1742140C1	140222223	X
8	8	Stanford University, Palo Alto, CA - Internal Medicine		ACTIVE	298140C3	140445555	X
9	9	Stanford University, Palo Alto, CA - Internal Medicine		ACTIVE	1743140C3	140555559	X
10	10	Stanford Univ, Palo Alto, CA - Internal Medicine		ACTIVE	298140C3	140512142	X
11	11	Stanford Univ, Palo Alto, CA - Internal Medicine/Research Pathway		ACTIVE	1743140C3	140188888	X

General Resources

- Match Calendars: general and detailed versions outlining Match milestones and deadlines

www.nrmp.org/match-calendars

- Match Checklists, Support Guides, and FAQs: important deadlines, reminders, frequently asked questions, and step-by-step instructions

www.nrmp.org/help

- Policies and Compliance: access to current Match Participation Agreements, Codes of Conduct, Waiver and Violations Policies

www.nrmp.org/policies

Data Resources

- [Charting Outcomes™: Characteristics of Applicants Who Match to Their Preferred Specialty](#)
- [Charting Outcomes™: Applicant Survey Results, 2024 Main Residency Match®](#)
- [Results and Data: 2024 Main Residency Match](#)



Thank You and Good Luck in the Match!



www.nrmp.org
support@nrmp.org
866-653-6767

Like us on Facebook
Follow us on X @TheNRMP
Follow us on LinkedIn